

# GRAND GATE

Automatic Doors

COPMANY PROFILE





## CONTENTS

- About Us
- Vision
- Mission
- Differentiation
- Products
- Our Clients
- Our Partners
- Contact Us





**ABOUT US**



- With extensive expertise in motors and electromechanical operations, we are at the forefront of manufacturing and continuous product development. Our Engineering and Design Department takes pride in precision and quality, adhering strictly to industry standards and specifications
- We achieve this through the provision of top-notch materials, exceptional post-sales services, and seamless contracting processes. Our dedicated team is passionate about pushing the boundaries of electronic gate technology and setting new benchmarks in the industry. We strive to minimize our ecological footprint by implementing eco-friendly practices in our manufacturing processes. When you choose Grand Gate, you're choosing a partner committed to delivering solutions that exceed expectations





## VISION

- Our vision is always centered around continuous development and progress to attain the highest quality, providing you with the latest and most advanced offerings in the realm of automatic doors





**MISSION**



- The company aspires to deliver optimal services and top-quality materials to its clientele, all at the most competitive prices, encompassing manufacturing, supply, installation, maintenance, and post-sales service, all within the agreed-upon timeframe stipulated in our contracts. The company boasts a cohesive team of engineers, technicians, and administrators, all extensively trained and operating at the highest echelon in our industry



A photograph of a modern building entrance. The entrance features a large, dark-framed glass door that is slightly ajar, revealing a bright, modern interior. The interior has a high ceiling, large windows, and a central courtyard area with a tree and some potted plants. The building's exterior is made of light-colored stone or concrete. The word "DIFFERENTIATION" is overlaid in red, bold, serif capital letters in the bottom left corner.

**DIFFERENTIATION**



**Our company distinguishes itself with extensive expertise and professionalism in the realm of electronic doors, establishing it as a trailblazer in this industry**

- **Continuous Evolution:** Our Engineering and Design Department consistently strives for excellence in crafting and designing electronic doors. This endeavor is aligned with client requisites, surpassing their expectations, and embracing cutting-edge technologies to deliver an unparalleled experience
- **Post-Sales Support:** We extend comprehensive after-sales services, encompassing installation and regular maintenance for our clientele
- This approach ensures that their experience is fruitful and satisfying, underlining our dedication to not only retain them but also offer a distinctive service
- The company consistently aspires towards singularity and preeminence within the electronic doors market, striving for the zenith and upholding our commitment to meet and exceed the needs and expectations of our esteemed clientele



A photograph of a modern building with a large glass facade, reflecting the sky and surrounding environment. The building has a curved roofline and is situated on a paved plaza. The image is dimly lit, suggesting dusk or dawn.

# PRODUCTS

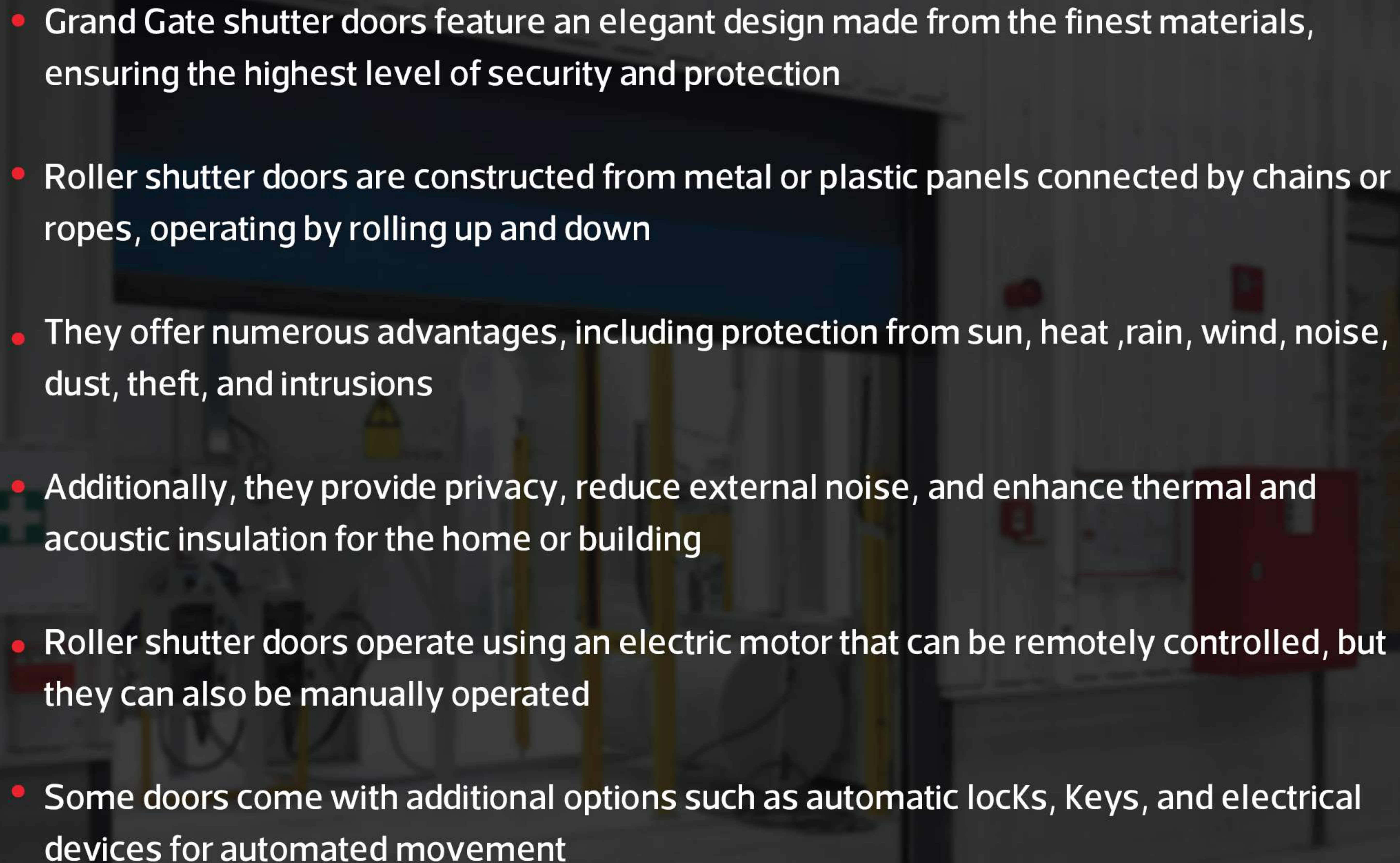
The company offers several products that cater to various customer needs and these products are divided into the following categories



- Industrial roller shutters





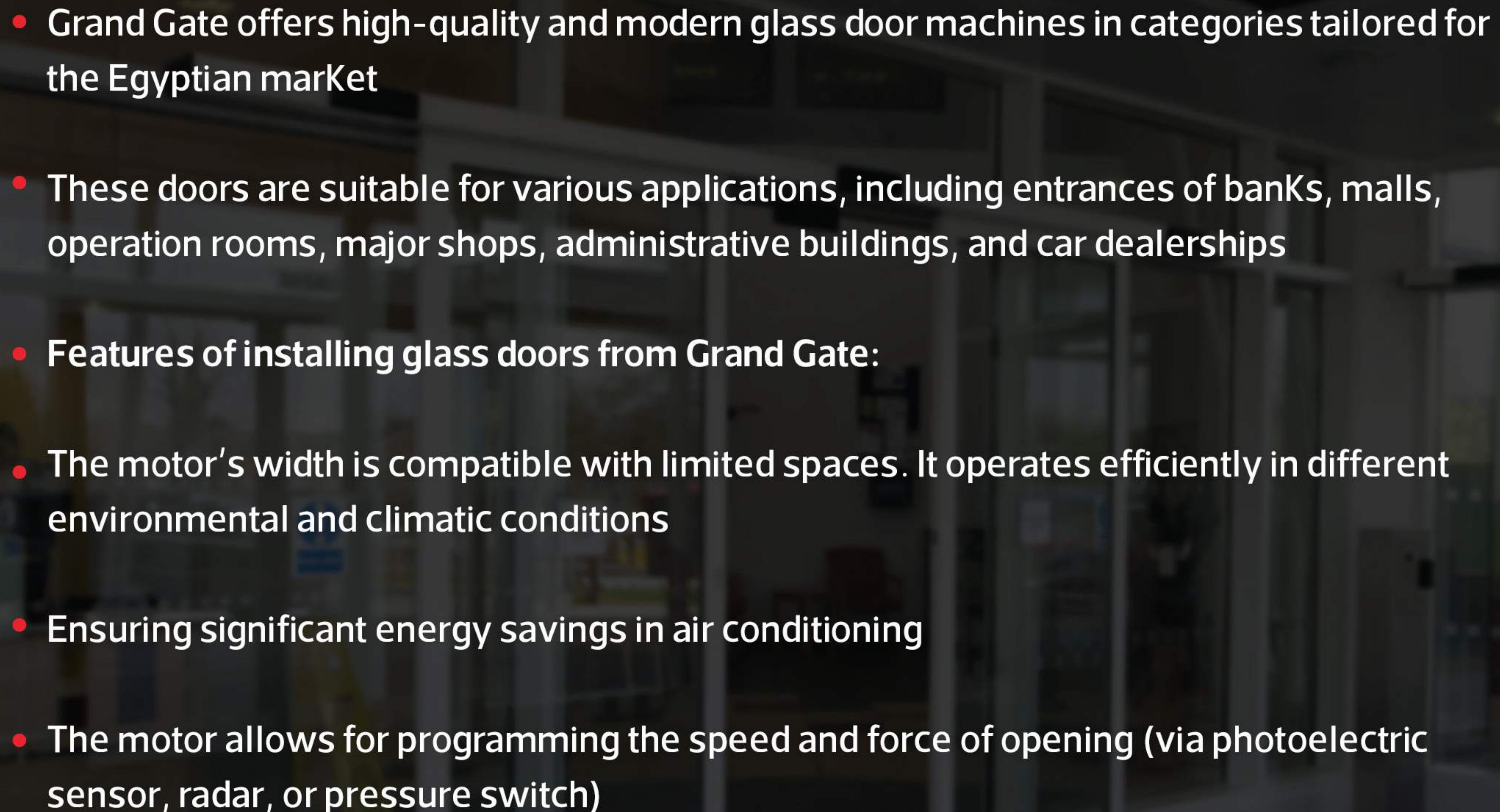
- 
- Grand Gate shutter doors feature an elegant design made from the finest materials, ensuring the highest level of security and protection
  - Roller shutter doors are constructed from metal or plastic panels connected by chains or ropes, operating by rolling up and down
  - They offer numerous advantages, including protection from sun, heat, rain, wind, noise, dust, theft, and intrusions
  - Additionally, they provide privacy, reduce external noise, and enhance thermal and acoustic insulation for the home or building
  - Roller shutter doors operate using an electric motor that can be remotely controlled, but they can also be manually operated
  - Some doors come with additional options such as automatic locks, Keys, and electrical devices for automated movement



- Automatic sliding doors





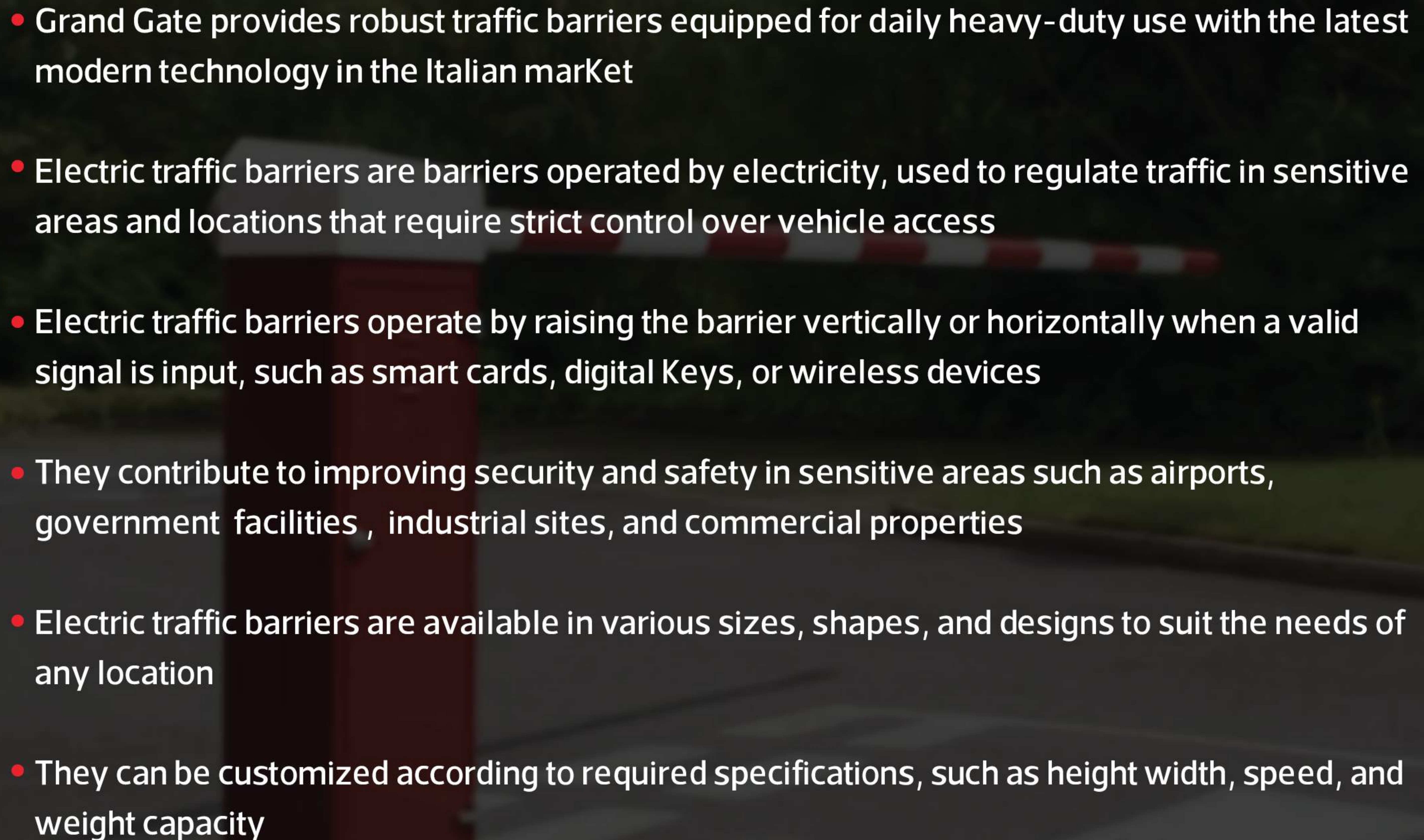
- 
- Grand Gate offers high-quality and modern glass door machines in categories tailored for the Egyptian market
  - These doors are suitable for various applications, including entrances of banks, malls, operation rooms, major shops, administrative buildings, and car dealerships
  - Features of installing glass doors from Grand Gate:
    - The motor's width is compatible with limited spaces. It operates efficiently in different environmental and climatic conditions
    - Ensuring significant energy savings in air conditioning
    - The motor allows for programming the speed and force of opening (via photoelectric sensor, radar, or pressure switch)



- Traffic Barriers





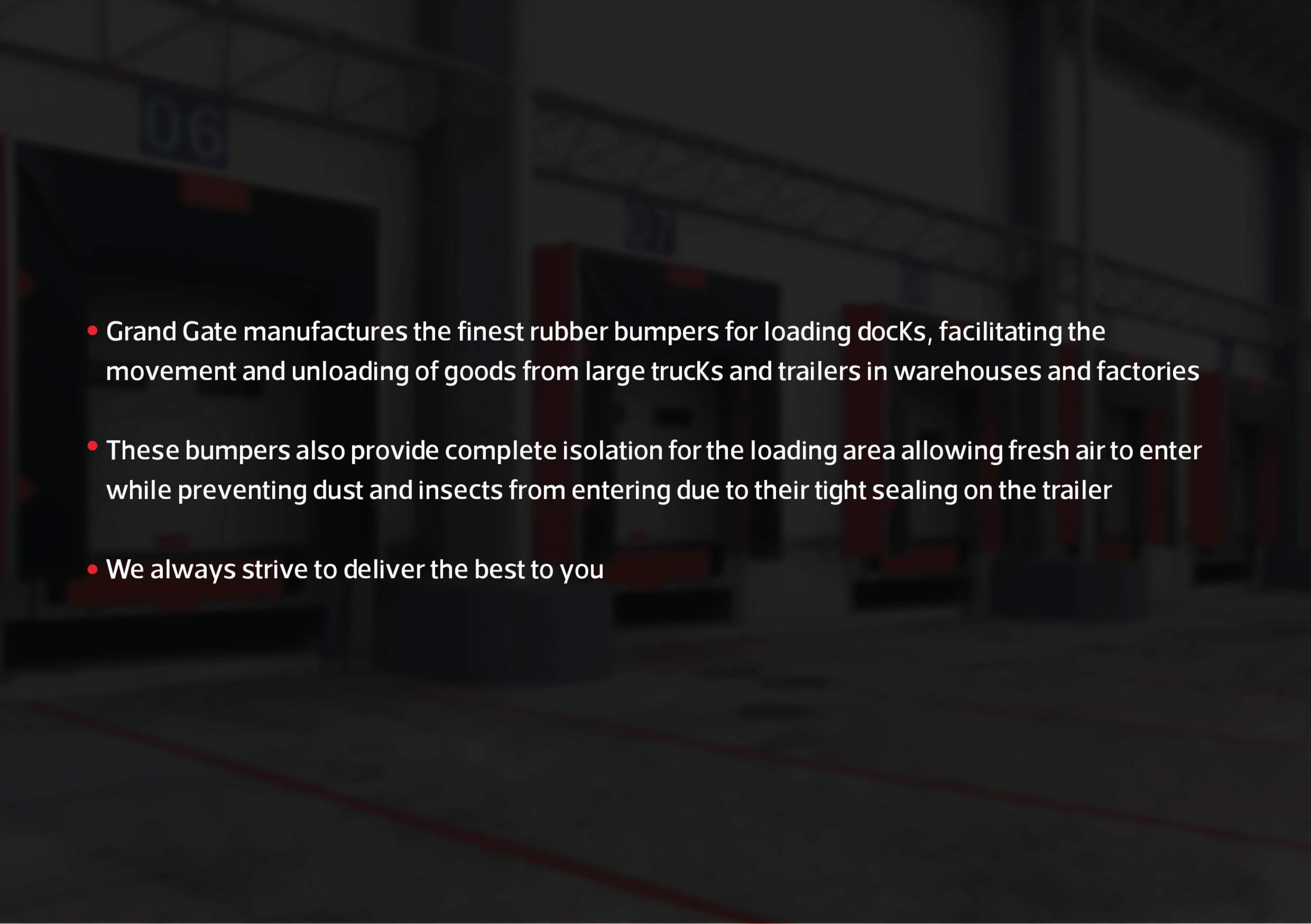
- 
- A red and white striped electric traffic barrier is shown in a parking lot. The barrier is a vertical red post with a horizontal arm that has red and white stripes. The background is a blurred parking lot with white lines on the asphalt.
- Grand Gate provides robust traffic barriers equipped for daily heavy-duty use with the latest modern technology in the Italian market
  - Electric traffic barriers are barriers operated by electricity, used to regulate traffic in sensitive areas and locations that require strict control over vehicle access
  - Electric traffic barriers operate by raising the barrier vertically or horizontally when a valid signal is input, such as smart cards, digital Keys, or wireless devices
  - They contribute to improving security and safety in sensitive areas such as airports, government facilities , industrial sites, and commercial properties
  - Electric traffic barriers are available in various sizes, shapes, and designs to suit the needs of any location
  - They can be customized according to required specifications, such as height width, speed, and weight capacity



- Loading Docking sol





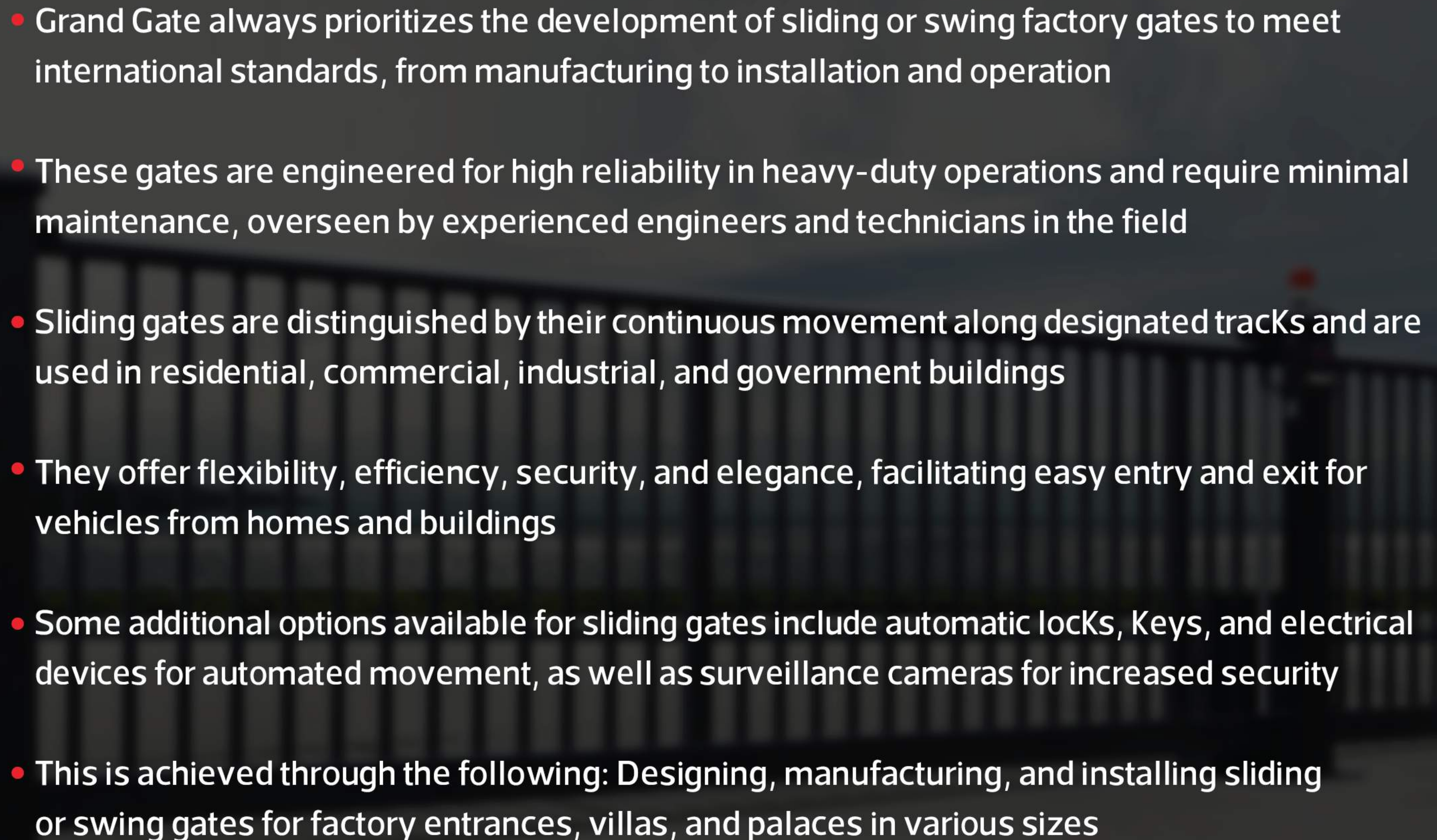
- 
- Grand Gate manufactures the finest rubber bumpers for loading docks, facilitating the movement and unloading of goods from large trucks and trailers in warehouses and factories
  - These bumpers also provide complete isolation for the loading area allowing fresh air to enter while preventing dust and insects from entering due to their tight sealing on the trailer
  - We always strive to deliver the best to you



- **Automatic Sliding Gates**





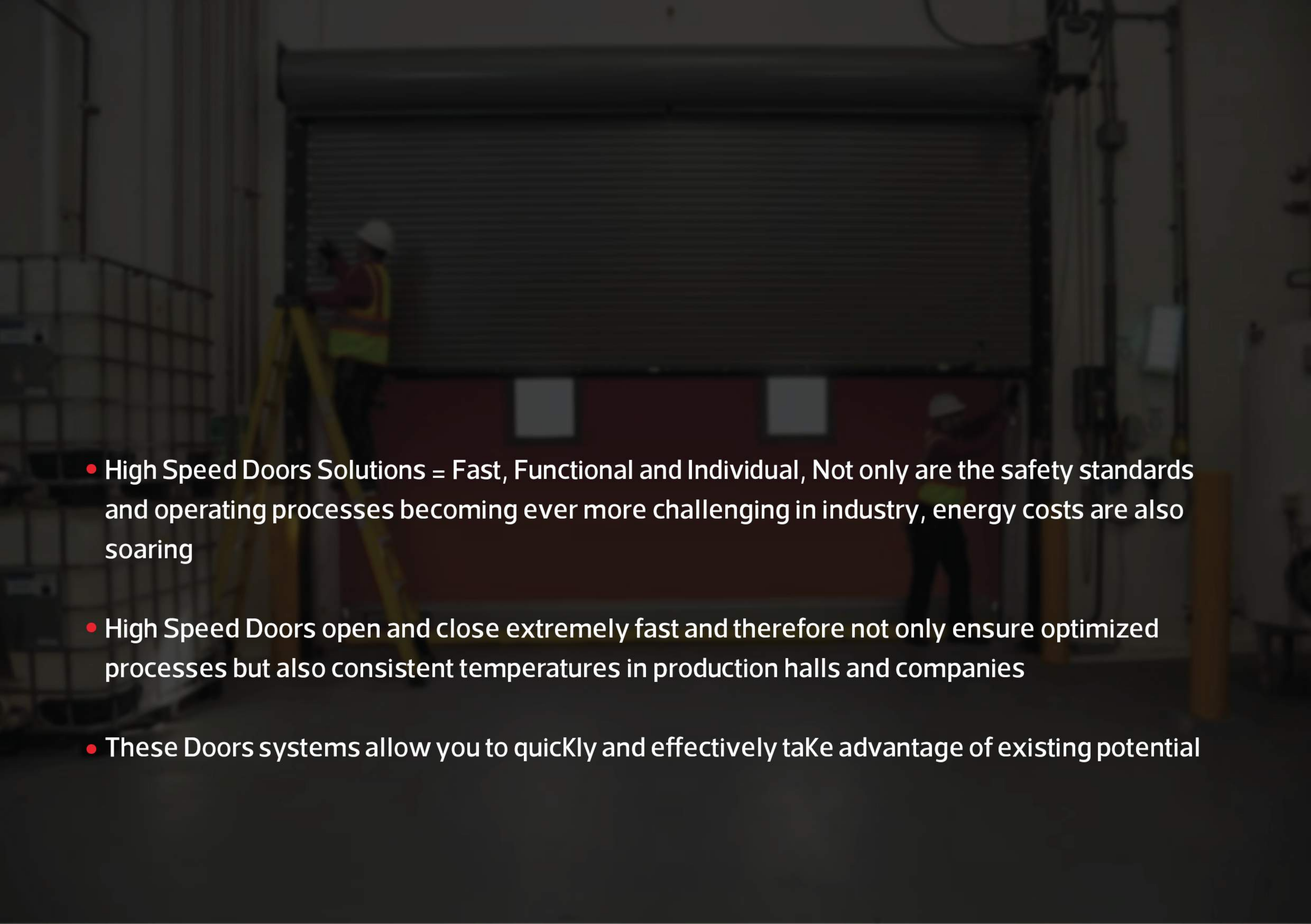
- 
- Grand Gate always prioritizes the development of sliding or swing factory gates to meet international standards, from manufacturing to installation and operation
  - These gates are engineered for high reliability in heavy-duty operations and require minimal maintenance, overseen by experienced engineers and technicians in the field
  - Sliding gates are distinguished by their continuous movement along designated tracks and are used in residential, commercial, industrial, and government buildings
  - They offer flexibility, efficiency, security, and elegance, facilitating easy entry and exit for vehicles from homes and buildings
  - Some additional options available for sliding gates include automatic locks, Keys, and electrical devices for automated movement, as well as surveillance cameras for increased security
  - This is achieved through the following: Designing, manufacturing, and installing sliding or swing gates for factory entrances, villas, and palaces in various sizes



- **High Speed Doors**







- High Speed Doors Solutions = Fast, Functional and Individual, Not only are the safety standards and operating processes becoming ever more challenging in industry, energy costs are also soaring
- High Speed Doors open and close extremely fast and therefore not only ensure optimized processes but also consistent temperatures in production halls and companies
- These Doors systems allow you to quickly and effectively take advantage of existing potential

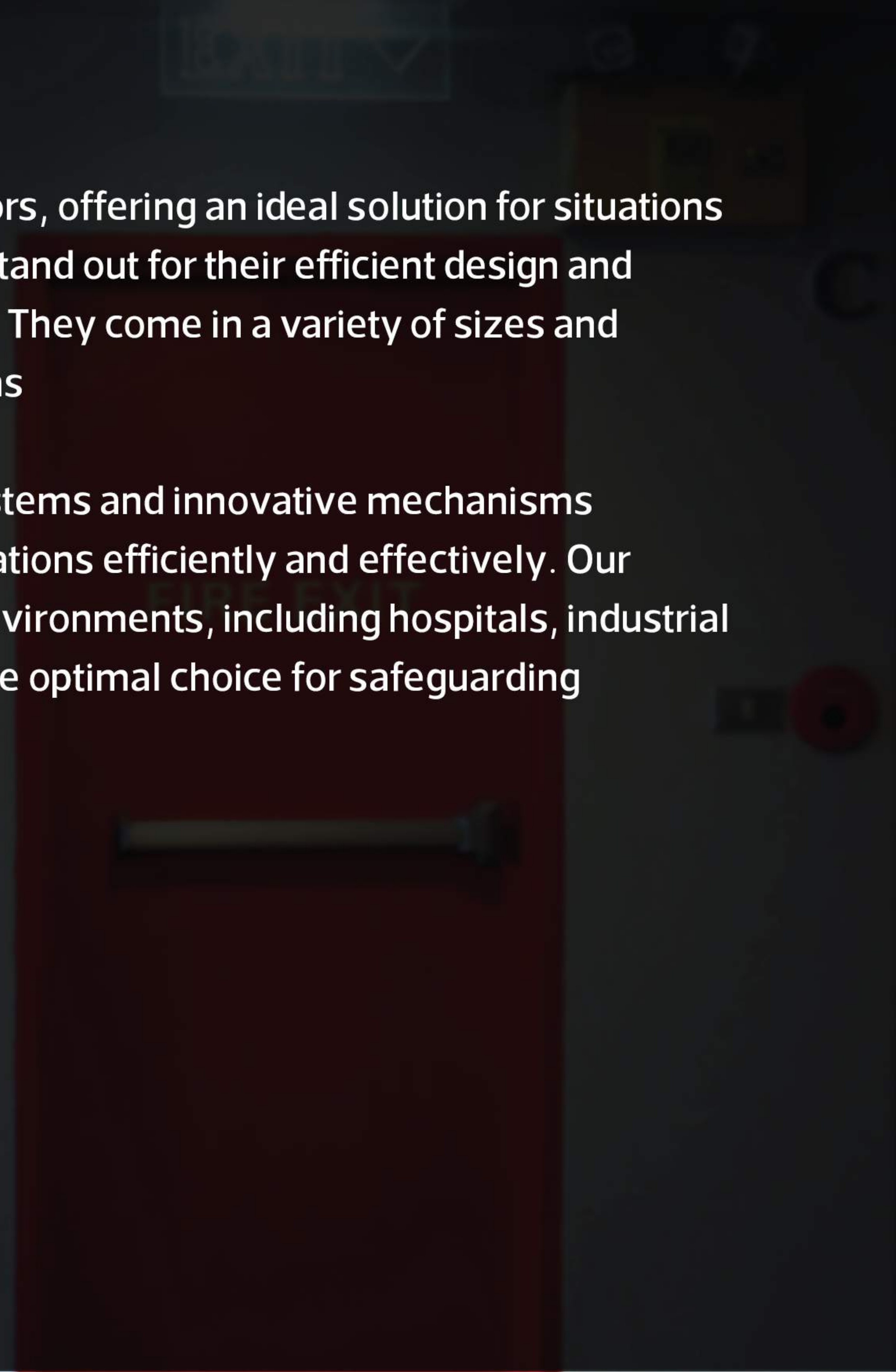


- **Emergency Hinged doors**





- Our company provides high-quality emergency doors, offering an ideal solution for situations that require swift and secure access. These doors stand out for their efficient design and durable materials that ensure a high level of safety. They come in a variety of sizes and finishes to suit different environments and situations
- Additionally, they incorporate advanced locking systems and innovative mechanisms that enhance their ability to handle emergency situations efficiently and effectively. Our emergency doors are suitable for a wide range of environments, including hospitals, industrial buildings, and commercial centers, making them the optimal choice for safeguarding individuals in emergency situations





- Residential Roller shutters





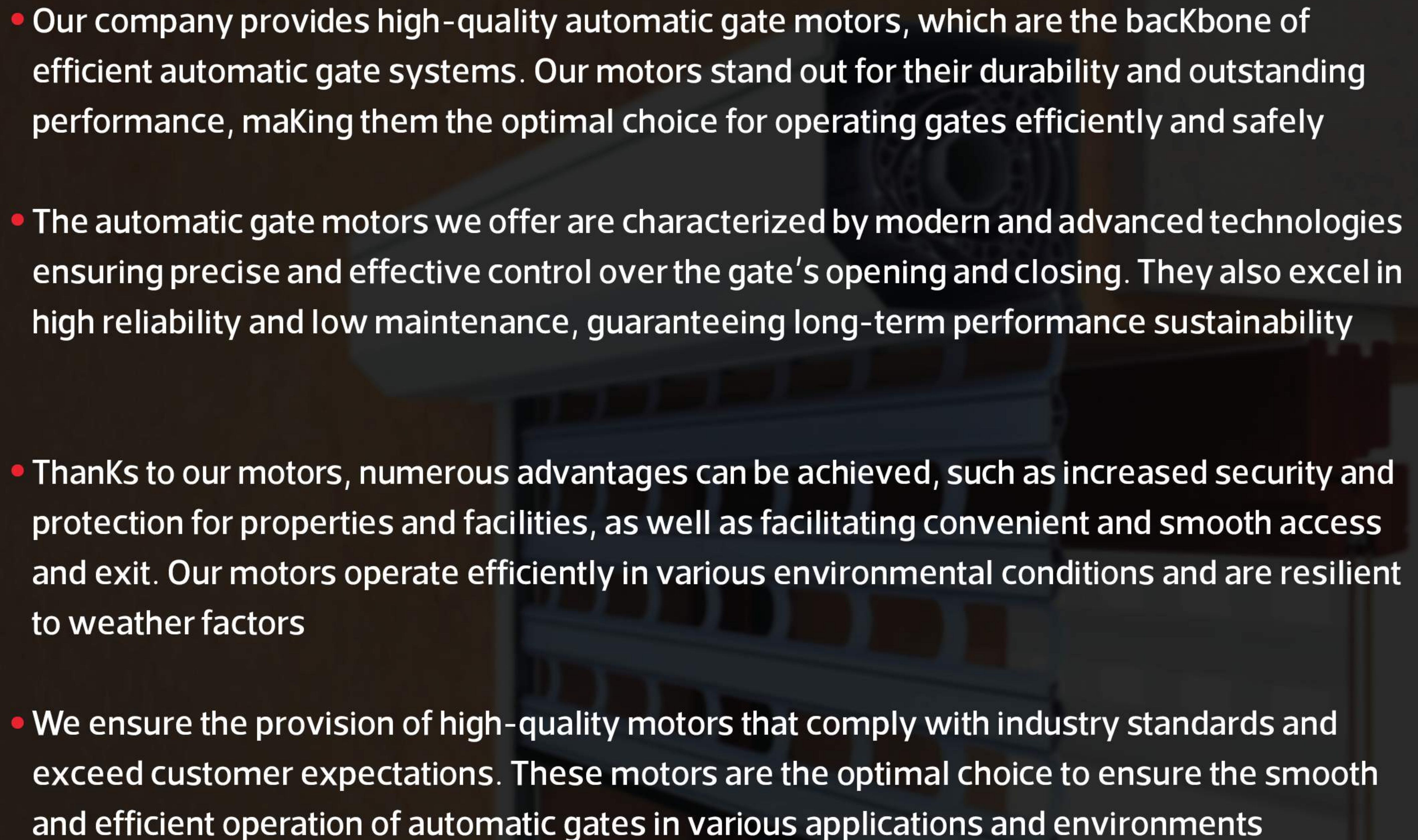
- Our company is dedicated to providing high-quality Shisheh (carpet) that offers an ideal blend of elegance and versatility. These Shisheh products stand out for their high durability and strength, making them perfect for various environments and conditions. They are available in a diverse
- Range of colors, patterns, and sizes to complement different space designs and requirements. Shisheh serves as an ideal solution for those seeking both aesthetic appeal and superior performance. It effectively protects against dust, dirt, and moisture, contributing to a cleaner environment and reducing slip hazards, especially in elevated areas.
- Thanks to their innovative and sturdy designs, Shisheh can withstand daily use and heavy traffic without compromising on quality or appearance. They add a touch of sophistication and elegance to spaces, whether indoors or outdoors.
- In summary, our Shisheh products are an excellent choice for those seeking both beauty and exceptional functionality in one product. They provide an effective solution for enhancing the environment and increasing comfort and safety in various spaces.



- **Roller shutters drives**





- 
- Our company provides high-quality automatic gate motors, which are the backbone of efficient automatic gate systems. Our motors stand out for their durability and outstanding performance, making them the optimal choice for operating gates efficiently and safely
  - The automatic gate motors we offer are characterized by modern and advanced technologies ensuring precise and effective control over the gate's opening and closing. They also excel in high reliability and low maintenance, guaranteeing long-term performance sustainability
  - Thanks to our motors, numerous advantages can be achieved, such as increased security and protection for properties and facilities, as well as facilitating convenient and smooth access and exit. Our motors operate efficiently in various environmental conditions and are resilient to weather factors
  - We ensure the provision of high-quality motors that comply with industry standards and exceed customer expectations. These motors are the optimal choice to ensure the smooth and efficient operation of automatic gates in various applications and environments



- Automatic Stainless steel doors





- Automatic swinging gates

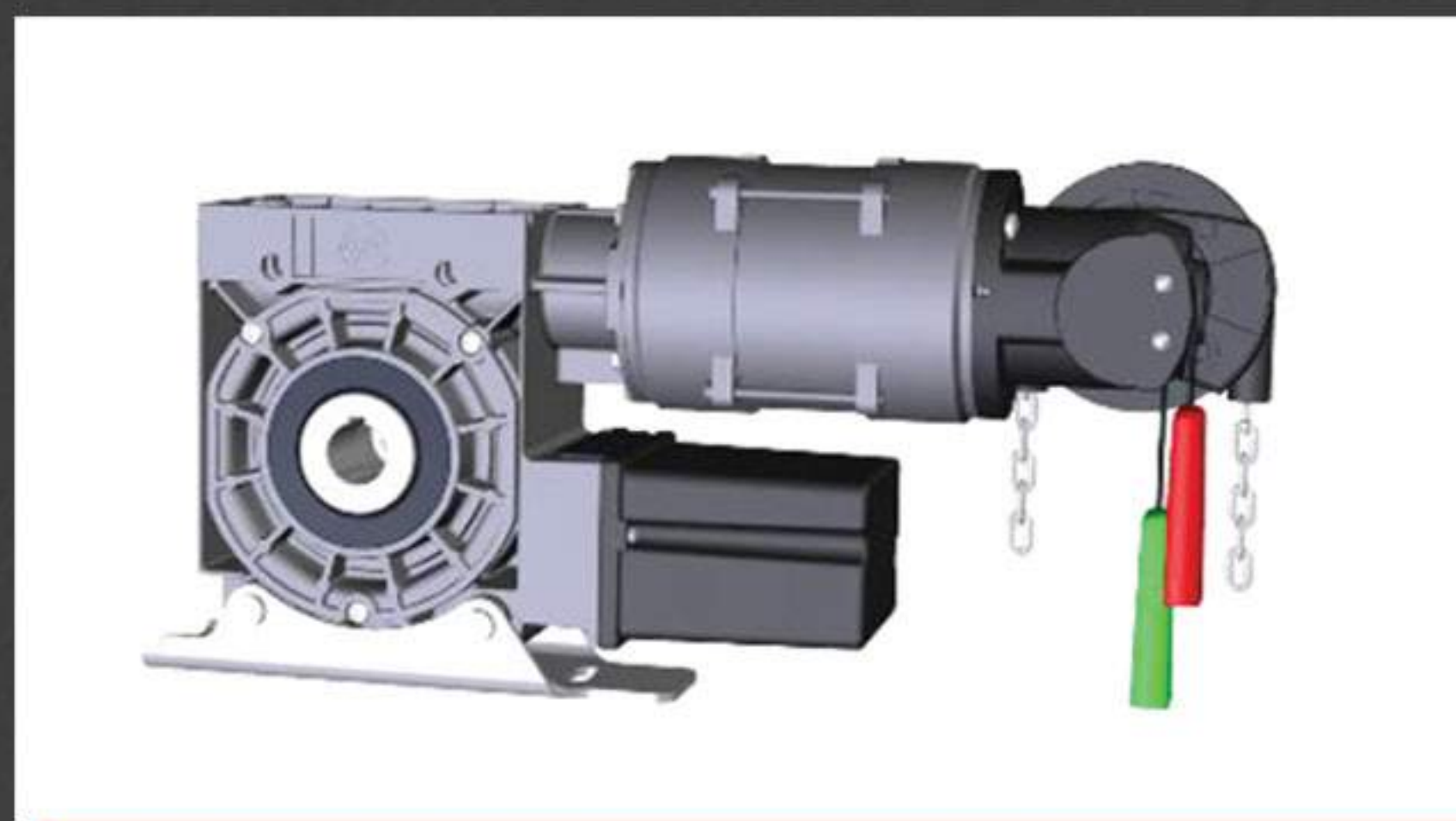




A close-up, low-angle shot of an elevator's mechanical system. The image shows a horizontal shaft with several large, orange-painted pulleys or wheels. Below the shaft, there are two vertical cables, each with a complex metal bracket or guide system. The background is a dark, industrial-looking structure, possibly the interior of a building or a large machine. The overall lighting is dim, with some highlights on the metal components.

**OUR ACCESSORIES & MOTORS**





Roller shutters drives



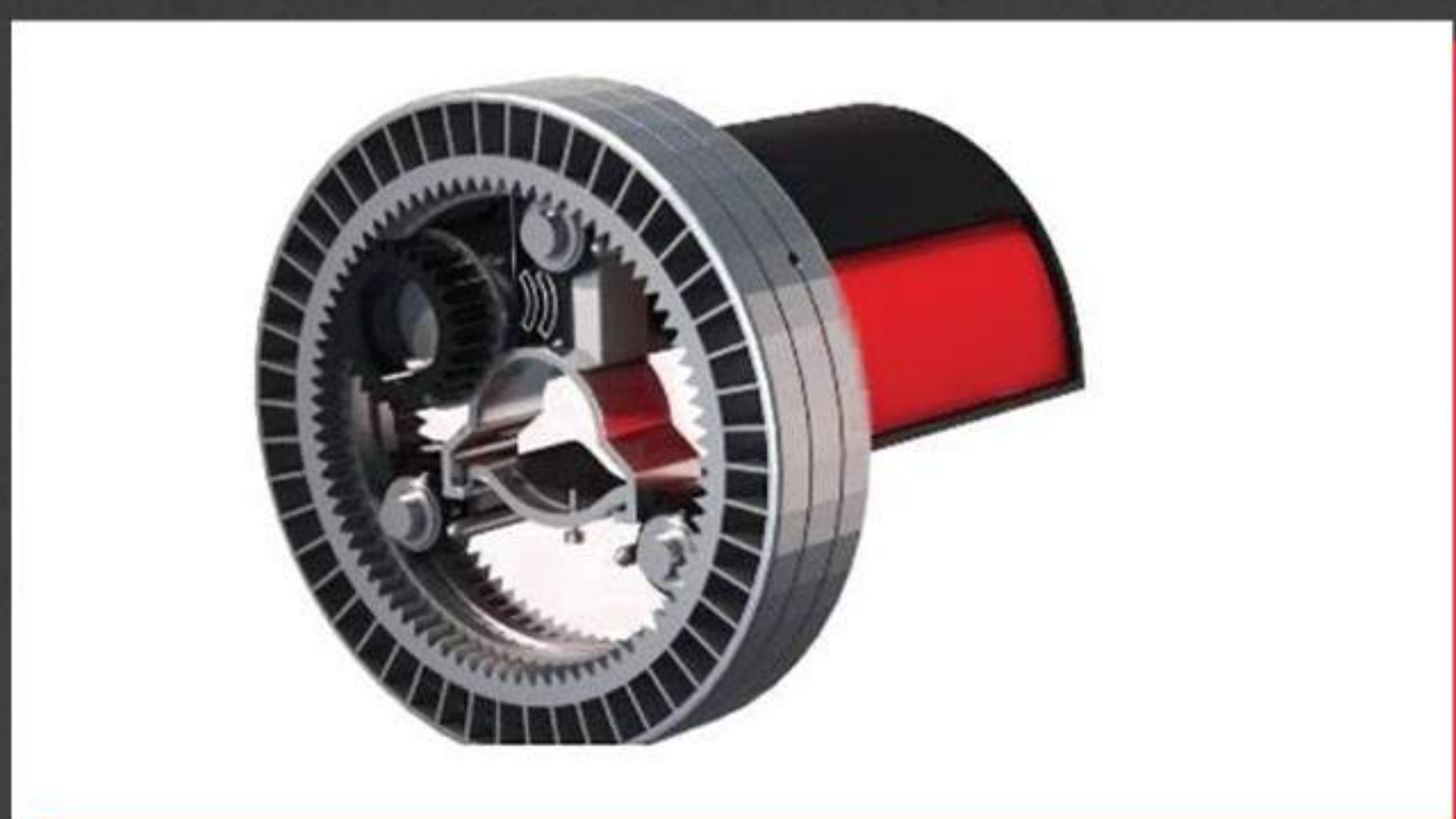
Tupluar motors



Tupluar motors



Said motor



Center motors



Swinging motors



Door clozar





Remot control



Radars



Swinging motors



Barriers motors



Sliding motors



Sliding motors



Sliding motors





Flasher



Fotocel



Key selector



Key selector



Key selector



Key selector



Resevar



A dark, moody photograph showing the silhouettes of four people in a meeting. They are seated around a table, with their reflections clearly visible on the glass surface below them. The background is a large window with a grid pattern, and a bright light source creates a starburst effect in the center of the group.

**OUR CLIENTS**



- Our company is honored to have had prior dealings with our esteemed clients, whose company names are as follows







OUR **PARTNERS**







# CONTACT US

We are delighted to have you contact us at any time during the week through the following means

 01111 222 011    023 88 753 58    010 33 326 433

 [www.grandgate-doors.com](http://www.grandgate-doors.com)    [Info@grandgate-doors.com](mailto:Info@grandgate-doors.com)

 Alfardous investment city - first on alwihat road - in front of dreamland





**THANK YOU**